

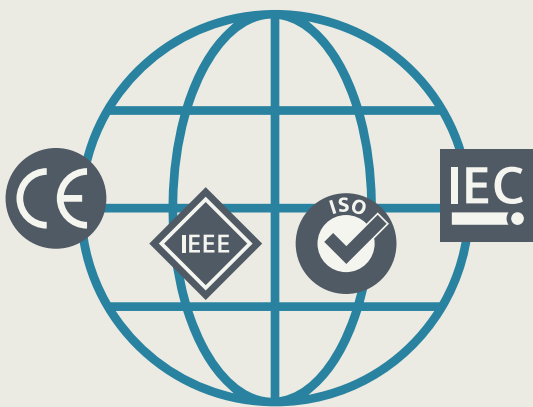
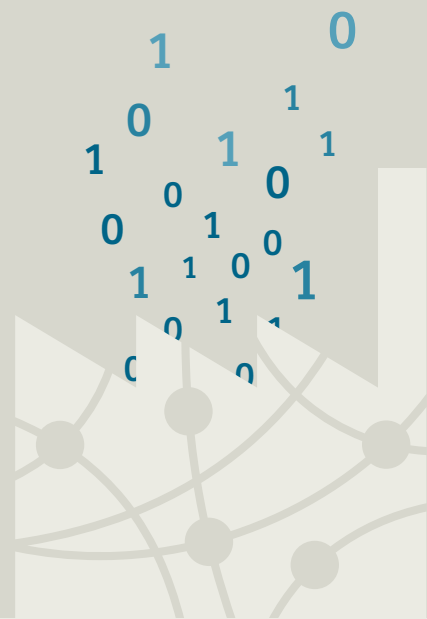
**SIEMENS**

*Totally Integrated Automation*

# Industrial Communication

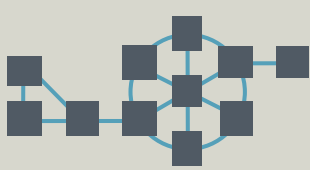
Modern and intelligent production equipment requires and generates **more and more data**.

**Fast and reliable communication** between all components involved is crucial.



Totally Integrated Automation is based on **proven, international, manufacturer-independent communication standards**.

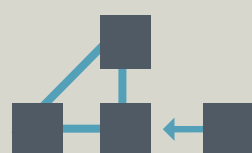
This facilitates



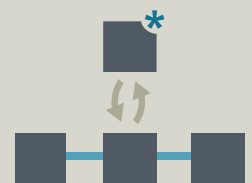
flexible network architectures



efficient installation

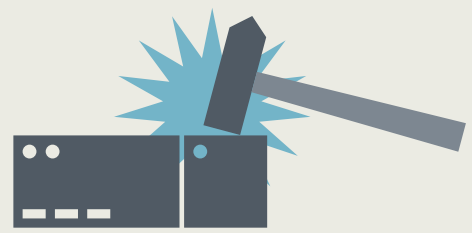


simple extension



and easy modernization

Industrial Communication with Totally Integrated Automation stands for **robust components**



as well as



powerful,



integrated,



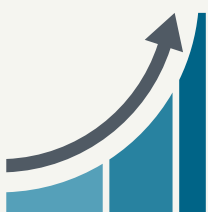
cost-efficient,



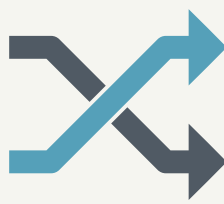
and future-oriented

network structures.

Industrial Communication with Totally Integrated Automation makes production processes



more efficient



more flexible



more reliable

Would you like to learn more?

[siemens.com/tia-ic](http://siemens.com/tia-ic)